



# TensCam in Action

News about energy-based healing from Crosby Advanced Medical Systems, Inc.

Charles Crosby, DO, MD (H)

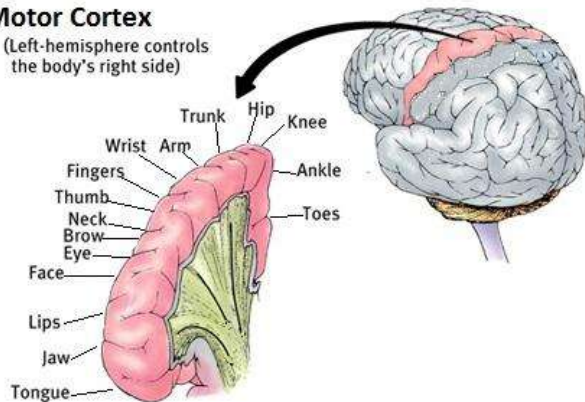
[www.tenscam.com](http://www.tenscam.com)

Call 407.823.9502

## Spectator survives hockey puck to the head!

### Motor Cortex

(Left-hemisphere controls the body's right side)



Recently, a naturopathic doctor treated a new patient in his late 60s who had been hit in the head by a stray hockey puck while attending a professional game. Although not a direct hit, the puck had ricocheted from the seat behind and hit the patient on the top of the head. A CT scan immediately after the accident revealed no internal bleeding and the patient had been sent home to recover. However, within days, severe pain developed in the left knee. Medical doctors were stumped. Medications provided little relief and for a month this patient had hobbled around on crutches with constant pain at a level of 7 to 8 (on a scale of 1-10). It was his 9-year-old grandson who suggested he see the naturopath.

The astute naturopath released pressure from locked cranial bones and found several interference fields on the head and around both knees. Remembering the motor correlation between areas on the top of the head and related body parts on the opposite side of the body, the naturopath determined that the area of injury corresponded to the left knee (see pg. 127 in *Beyond Pills, Knives & Needles*). The patient received LaserCam therapy to this area and other presenting interference fields.

According to the naturopath, "The patient's recovery was dramatic. The day after treatment, he got out of bed, and realized he was not in pain. He experienced a slight buzzing in the head, which lasted several seconds. During the next few days, the patient noted mild pain (3 on a scale of 1-10) when going up and down stairs and with certain movements. Otherwise his pain was gone. The patient had a follow-up appointment several weeks later which he cancelled stating that his recovery had been complete."

The primary motor cortex is often overlooked by the medical profession during diagnosis. This area of the brain is located at the top of the head and handles signals coming from the premotor area of the brain which are then transmitted via nerves to the spinal cord. An Injury or interference field in the motor cortex often affects corresponding body parts. In this case, when the motor cortex interference field was treated following release of pressure on the cranial bones and when attention was given to inflammation in the knees, major improvement was realized such that further therapy was not necessary.

Crosby Advanced Medical Systems, Inc.  
13556 Dornoch Drive, Suite 1  
Orlando, FL 32828 USA

Call 407.823.9502



